

SPECIFICATION SHEET

JFW MODEL 50R-029

ROTARY ATTENUATOR

JFW Industries, Inc.
Phone: 317-887-1340
sales@jfwindustries.com
www.jfwindustries.com

Frequency Range DC-2200 MHz

Impedance 50 Ohms nominal

Attenuation Range 0-70 dB in 10 dB steps

VSWR 1.2:1 maximum DC-1000 MHz
1.4:1 maximum 1000-2200 MHz

Insertion Loss 0.3 dB maximum DC-1000 MHz
0.5 dB maximum 1000-2200 MHz

Attenuation Accuracy ± 0.5 dB or 1% DC-500 MHz
± 0.5 dB or 2% 500-1000 MHz
± 0.5 dB or 3% 1000-2200 MHz
(whichever is greater)

RF Input Power 2 Watts average
1000 Watts peak

Direction of Rotation Attenuation increases in a Clockwise direction

Indexing 30 degrees with stops at
Minimum and maximum

RF Connector BNC, N, SMA, TNC or 4.1/9.5

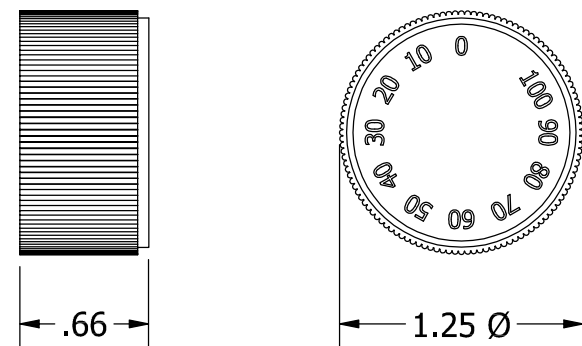
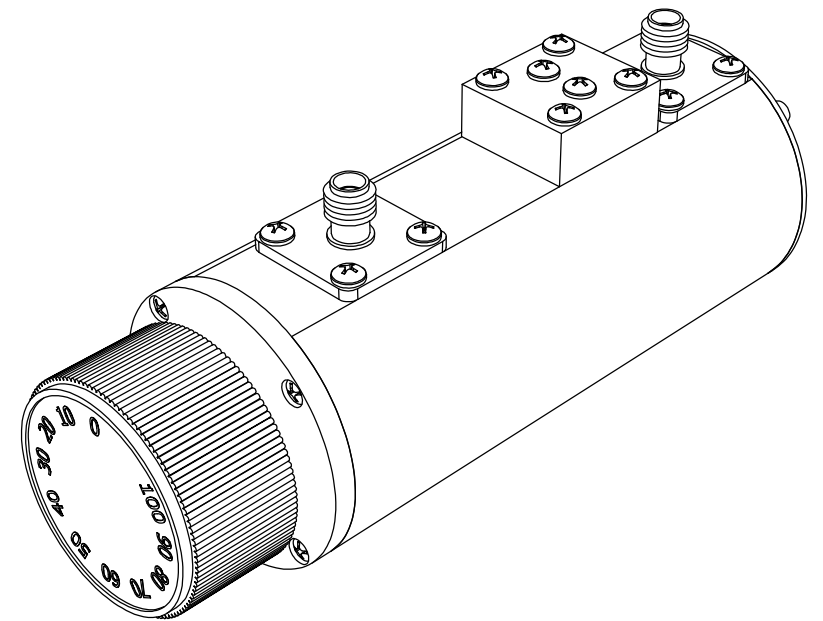
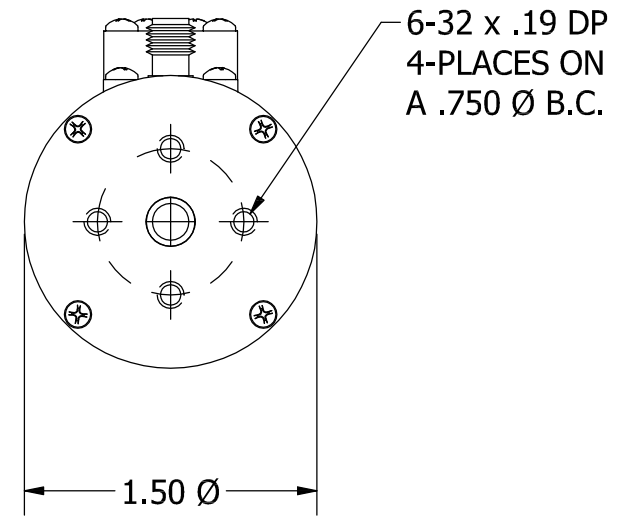
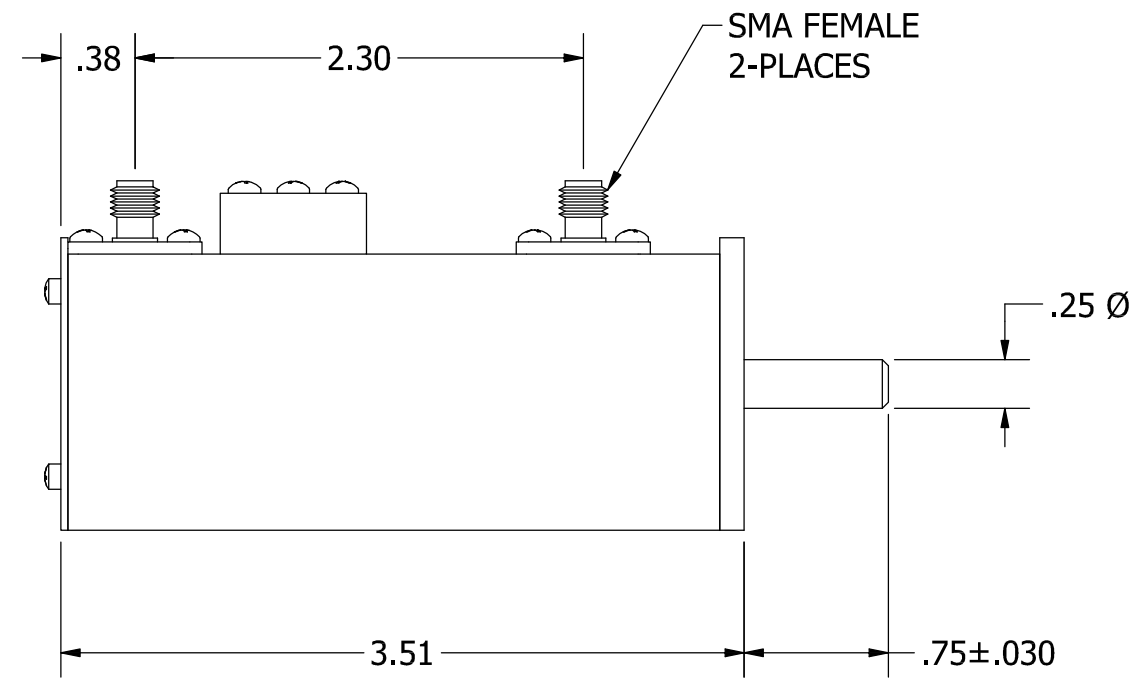
Operating Temperature Range -20°C to +85°C

Lifetime 500,000 attenuation steps


Knob/Panel Mounting Drawing 092-8435-01

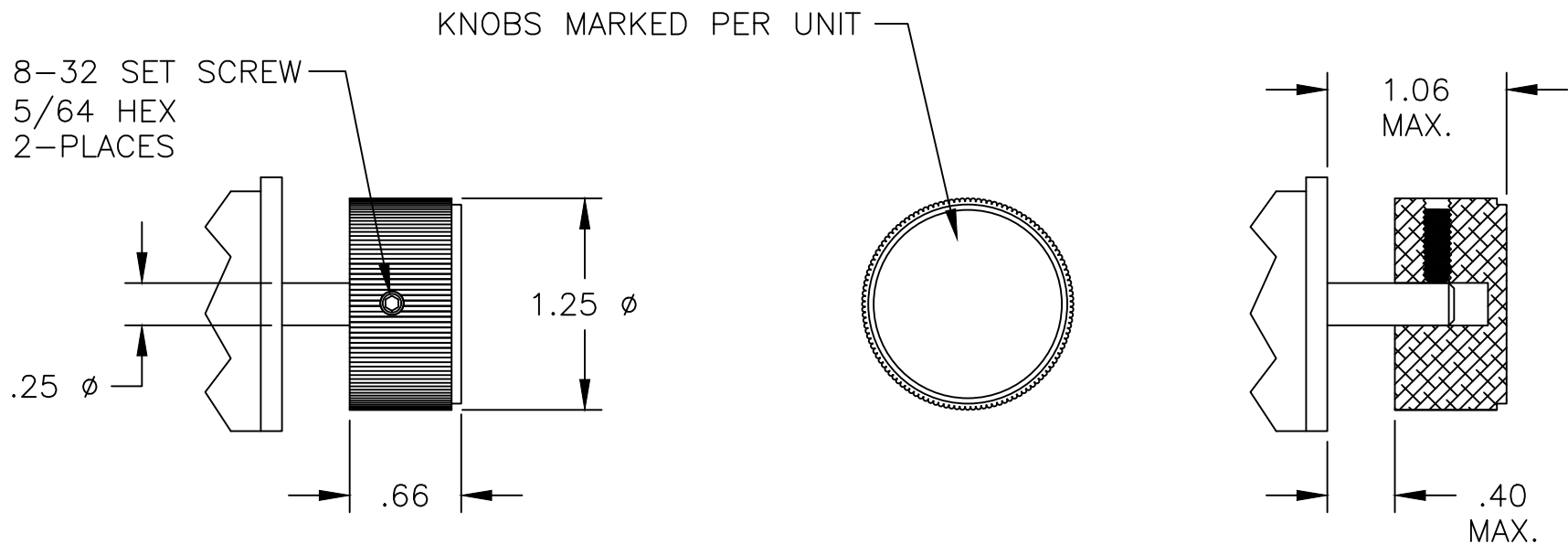
Outline Drawing Numbers 092-428-01 (50R-029 BNC)
092-428-02 (50R-029 BNC/SMA)
092-428-03 (50R-029 N)
092-428-04 (50R-029 N/SMA)
092-428-05 (50R-029 TNC)
092-428-06 (50R-029 TNC/SMA)
092-428-07 (50R-029 SMA)
092-428-08 (50R-029 N F/M)
092-428-09 (50R-029 N M/F)
092-428-10 (50R-029 TNC M/F)
092-8368 (50R-029 4.1/9.5)

ECR/ECN #	DATE	REV	APPR / DATE	ECR/ECN #	DATE	REV	APPR / DATE
17378	07/02/2009	D	TRS 07/02/2009	25732	09/10/2015	G	TRS 09/10/2015
18358	03/05/2010	E	TRS 03/05/2010	27541	02/07/2017	H	TRS 02/07/2017
25572	07/28/2015	F	TRS 07/28/2015	28157	10/05/2017	I	TRS 10/05/2017




KNOB DETAIL

REV	ECN	DATE	BY	APPR		
-	ISSUED	2-10-95	CDJ	FDW	 JFW INDUSTRIES, INC. www.jfwindustries.com PH: 317-887-1340	
A	4581	3-1-95	TEZ	FDW		
B	4983	5-21-96	TEZ	FDW		
C	6532	12-11-00	CDJ	TEZ		
D	6750	6-11-01	CDJ	TEZ		
E	12635	4-20-06	ETW	TEZ		
F	24444	9-11-15	JZ	TEZ	MATERIAL ALUMINUM ALLOY PROPRIETARY INFORMATION FINISH CHEMFILM TCP ALL SURFACES ARE TO BE FREE OF BURRS, PITS & SCRATCHES MODEL 50R-XXX SCALE FULL TOLERANCES .XX±.010 .XXX±.005 XX°±.5° DESCRIPTION 0-100 dB ROTARY ATTEN. DWG # 092-2275	



NOTE: PANEL THICKNESS IN ADDITION TO SCREW HEAD MUST NOT EXCEED .40 MAX.

REV	ECN	DATE	BY	APPR	 JFW INDUSTRIES, INC. www.jfwindustries.com PH: 317-887-1340	
-	ISSUED	9-24-15	JZ	TEZ	MATERIAL PLASTIC / ALUMINUM INLAY FINISH BLACK / CLEAR MODEL 132-001 DESCRIPTION ROTOR KNOB MOUNTING	
A	30055	12-10-19	JZ	TEZ		
					SCALE	FULL
					PROPRIETARY INFORMATION ALL SURFACES ARE TO BE FREE OF BURRS, PITS, & SCRATCHES TOLERANCES .XX±.010 .XXX±.005 XX±.5' DWG # 092-8435-01	