

**SPECIFICATION SHEET**

**JFW MODEL 50R-248**

**ROTARY ATTENUATOR**

JFW Industries, Inc.  
Phone: 317-887-1340  
sales@jfwindustries.com  
www.jfwindustries.com

Frequency Range DC-2500 MHz

Impedance 50 Ohms nominal

Attenuation Range 0-10 dB in 1 dB steps

VSWR 1.2:1 DC-1000 MHz  
1.5:1 1000-2500 MHz

Insertion Loss 0.25 dB maximum DC-1000 MHz  
0.50 dB maximum 1000-2500 MHz

Attenuation Accuracy ± 0.25 dB maximum DC-1000 MHz  
± 0.50 dB maximum 1000-2500 MHz

RF Input Power 2 Watts average  
1000 Watts peak

Direction of Rotation Attenuation increases in a Clockwise direction

Indexing 30 degrees with stops at Minimum and maximum

RF Connector BNC, N, SMA, TNC or RPT female  
(RPT = Reverse Polarity TNC female)

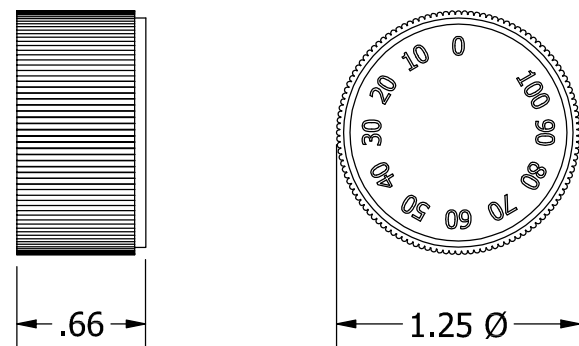
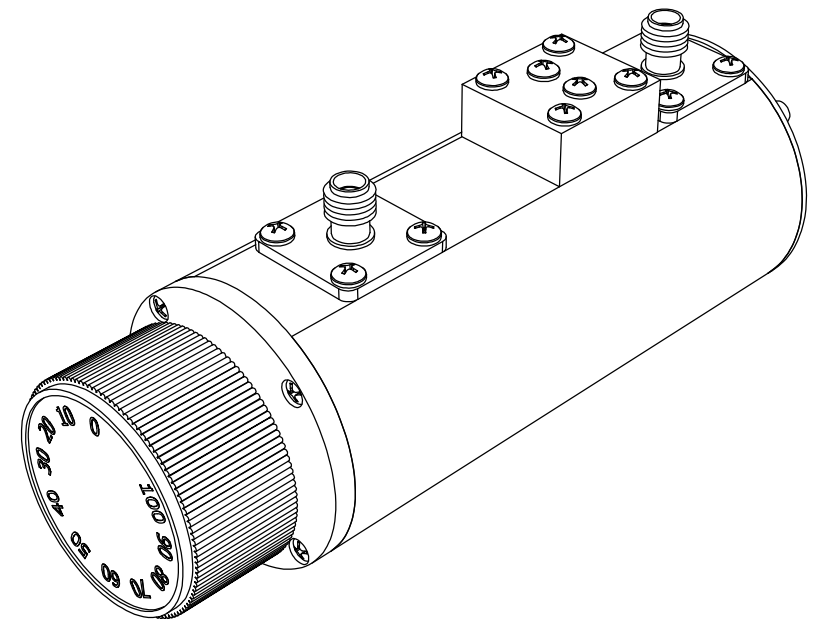
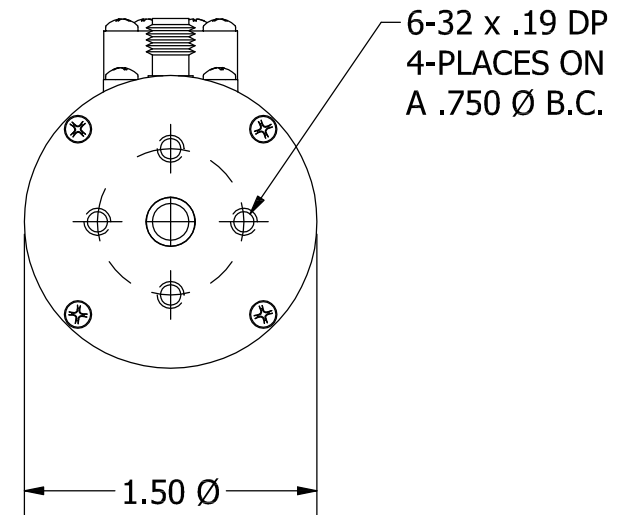
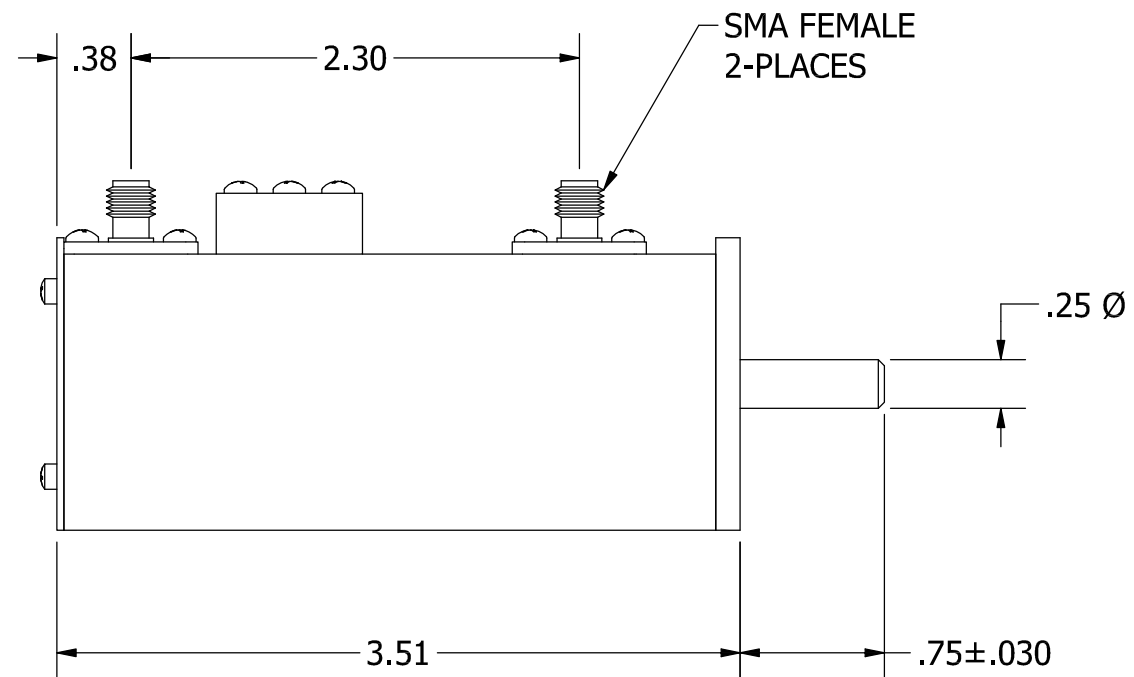
Operating Temperature Range -20°C to +85°C

Lifetime 500,000 attenuation steps

Knob/Panel Mounting Drawing 092-8435-01

Outline Drawings 092-039 (50R-248 SMA)  
092-427 (50R-248 BNC)  
092-6194 (50R-248 N/SMA)  
092-6929 (50R-248 TNC)  
092-7394 (50R-248 RPT)  
092-9852 (50R-248 TNC/SMA)

ECR/ECN #	DATE	REV	APPR / DATE	ECR/ECN #	DATE	REV	APPR / DATE
20344	07/19/2011	F	TRS 07/19/2011	25776	09/29/2015	I	TRS 09/29/2015
21678	06/25/2012	G	TRS 06/25/2012	28021	08/09/2017	J	TRS 08/09/2017
22960	06/24/2013	H	TRS 06/24/2013	28157	10/05/2017	K	TRS 10/05/2017



KNOB DETAIL

REV	ECN	DATE	BY	APPR
-	ISSUED	2-10-95	CDJ	FDW
A	4581	3-1-95	TEZ	FDW
B	4983	5-21-96	TEZ	FDW
C	6532	12-11-00	CDJ	TEZ
D	6750	6-11-01	CDJ	TEZ
E	12635	4-20-06	ETW	TEZ
F	24444	9-11-15	JZ	TEZ



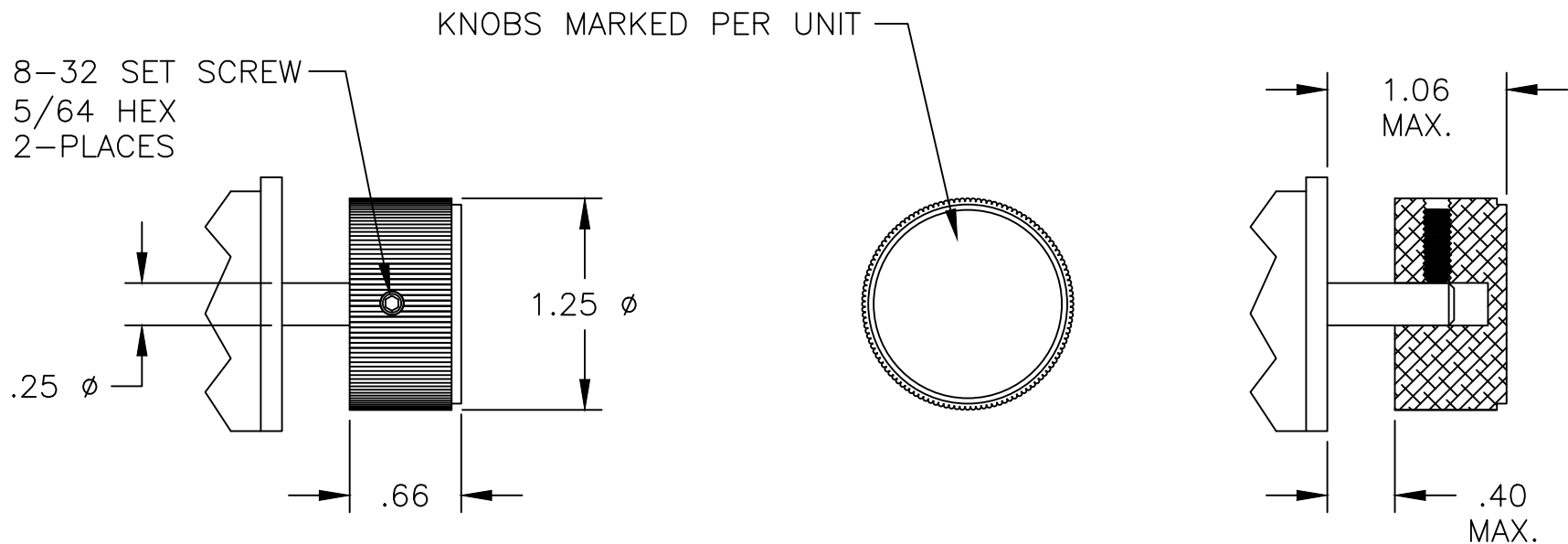
**JFW INDUSTRIES, INC.**

[www.jfwindustries.com](http://www.jfwindustries.com)


PH: 317-887-1340

MATERIAL	ALUMINUM ALLOY	PROPRIETARY INFORMATION
FINISH	CHEMFILM TCP	ALL SURFACES ARE TO BE FREE OF BURRS, PITS & SCRATCHES
MODEL	50R-XXX	SCALE FULL
DESCRIPTION	0-100 dB ROTARY ATTEN.	TOLERANCES .XX±.010 .XXX±.005 XX°±.5° DWG #
		092-2275





NOTE: PANEL THICKNESS IN ADDITION TO SCREW HEAD MUST NOT EXCEED .40 MAX.

REV	ECN	DATE	BY	APPR	 <b>JFW INDUSTRIES, INC.</b> <a href="http://www.jfwindustries.com">www.jfwindustries.com</a> PH: 317-887-1340	
-	ISSUED	9-24-15	JZ	TEZ	MATERIAL PLASTIC / ALUMINUM INLAY FINISH BLACK / CLEAR MODEL 132-001 DESCRIPTION ROTOR KNOB MOUNTING	
A	30055	12-10-19	JZ	TEZ		
					SCALE	FULL
					PROPRIETARY INFORMATION ALL SURFACES ARE TO BE FREE OF BURRS, PITS, & SCRATCHES TOLERANCES .XX±.010 .XXX±.005 XX±.5' DWG # 092-8435-01	