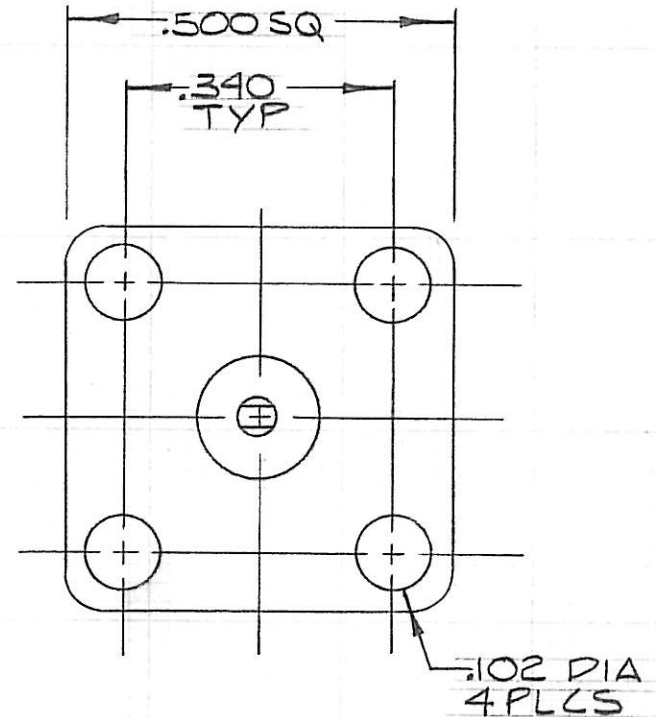
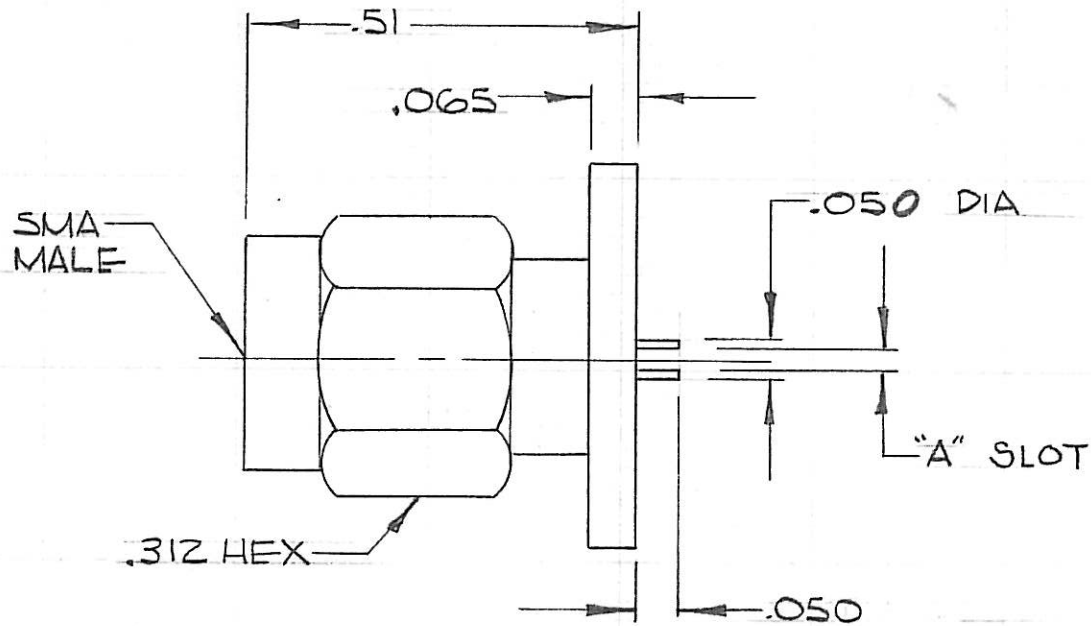


PART NO.	"A" SLOT ±.003/-.001
CD15761 -1	.012
-2	.018
-3	.028
-4	.036



- (3) ADD SUFFIX CC TO P/N FOR CAPTIVATED CONTACT
 (2) ADD SUFFIX SF TO P/N FOR STAINLESS FINISH
 (1) FSC NO. 30990

NOTICE
 This drawing embodies a CONFIDENTIAL proprietary design originated by Connecting Devices, Inc., and all design, manufacturing, reproduction, use and sale rights regarding the same are expressly reserved. It is submitted under a confidential relationship for a specified purpose, and the recipient agrees by accepting this drawing not to supply or disclose any information regarding it to any unauthorized person, or to incorporate in other projects any special feature peculiar to this design. All patent rights hereto are expressly reserved by Connecting Devices, Inc., El Segundo, Calif.

- TOLERANCES AND NOTES EXCEPT AS NOTED**
 DIMENSIONS ARE IN INCHES
 LINEAR .XX ± ~~.003~~ ^{.020}
 .XXX ± ~~.001~~ ^{.018} ANGULAR ± 1/2°
 FRACTION ± 1/32
- MACHINE FINISH ∇ 63 RMS
 - BREAK ALL SHARP EDGES .005-.010
 - ALL MACHINED FILLETS R.
 - ALL MACHINED SURFACES SQUARE TO RESPECTIVE AXIS WITHIN .005 PER INCH.
 - MACHINED DIAMETERS TO BE CONCENTRIC WITHIN .002-.005 T.I.R.
 - DIMENSIONS TO BE MET BEFORE PLATING.
 - CHAMFER ALL THDS. 45°
 - THREADS PER H-28.
 - REMOVE FRAYED EDGES ON TEFLON.
 - REMOVE ALL BURRS.

	STAINLESS STEEL		MIL-G-39012	
	MATERIAL	SIZE	SPECIFICATION	PROCUREMENT
FINISH		HEAT TREAT	B	1/27/82
GOLD			APPR.	
			ENG.	3/9/82
CONNECTING DEVICES Inc. 108 Arena Street, El Segundo, Calif. 90245			CHK.	3/11/82
			DR.	NAED 7/27/82
FLANGE MOUNT MALE / TERMINAL			CD1 5761	B