

SPECIFICATION SHEET

JFW MODEL 75R-057

ROTARY ATTENUATOR

JFW Industries, Inc.
Phone: 317-887-1340
sales@jfwindustries.com
www.jfwindustries.com

Frequency Range DC-1000 MHz

Impedance 75 Ohms nominal

Attenuation Range 0-1 dB in 0.1 dB steps

VSWR 1.3:1 maximum DC-500 MHz
1.4:1 maximum 500-1000 MHz

Insertion Loss 0.8 dB maximum

Attenuation Accuracy ± 0.04 dB DC-500 MHz
± 0.08 dB 500-1000 MHz

RF Input Power 1 Watt average
1000 Watts peak

Direction of Rotation Attenuation increases in a Counter-
Clockwise direction

Indexing 30 degrees with stops at minimum and
maximum

RF Connector BNC, F or N female

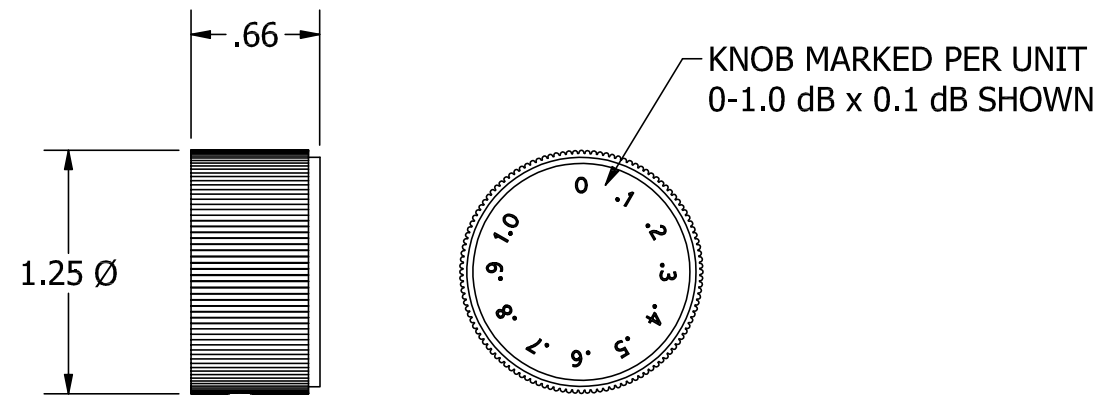
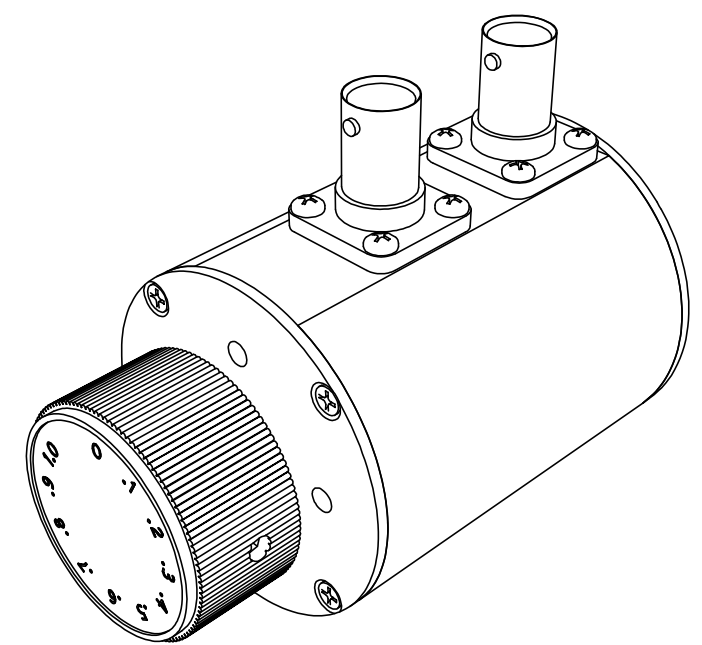
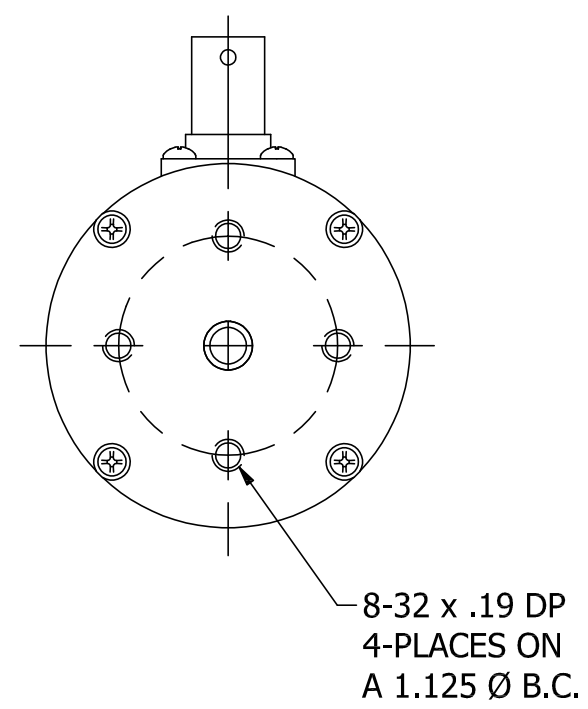
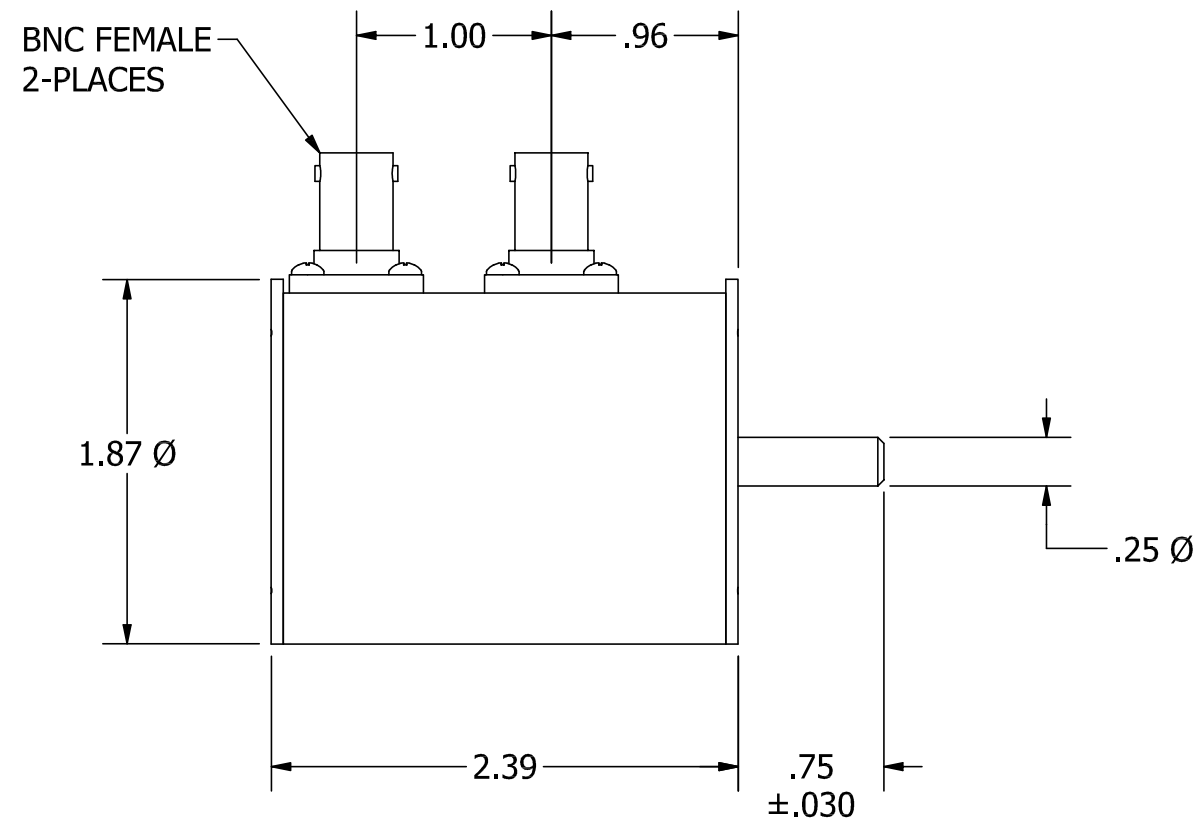
Operating Temperature Range -20°C to +85°C

Lifetime 500,000 attenuation steps


Knob/Panel Mounting Drawing 092-8435-03

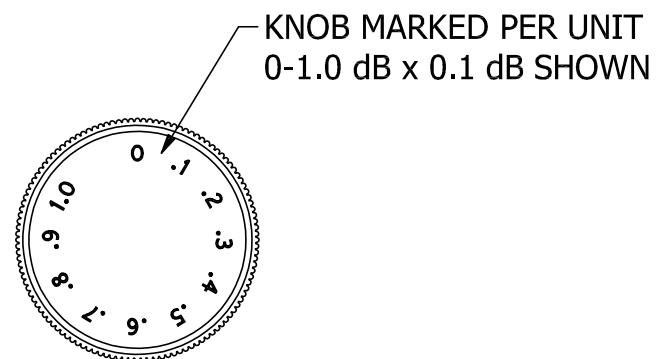
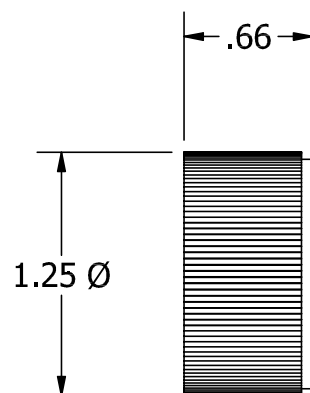
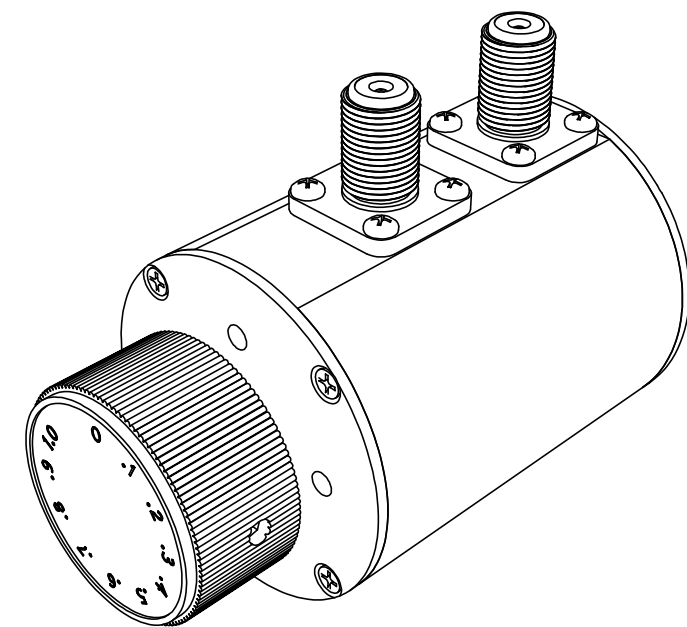
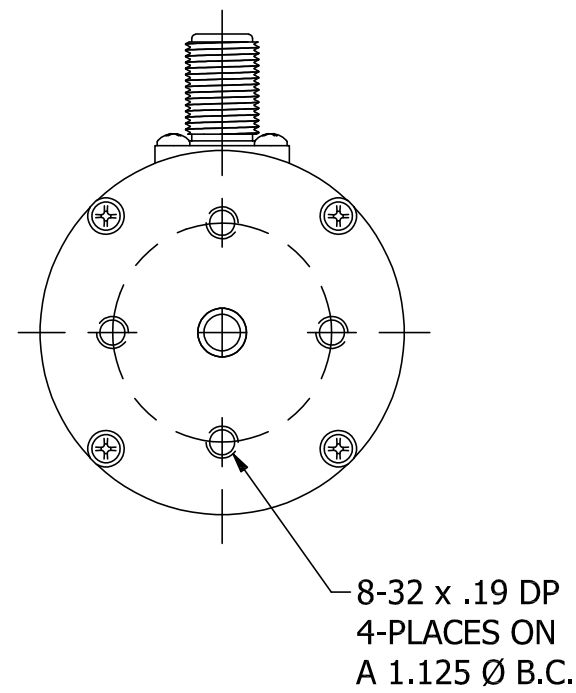
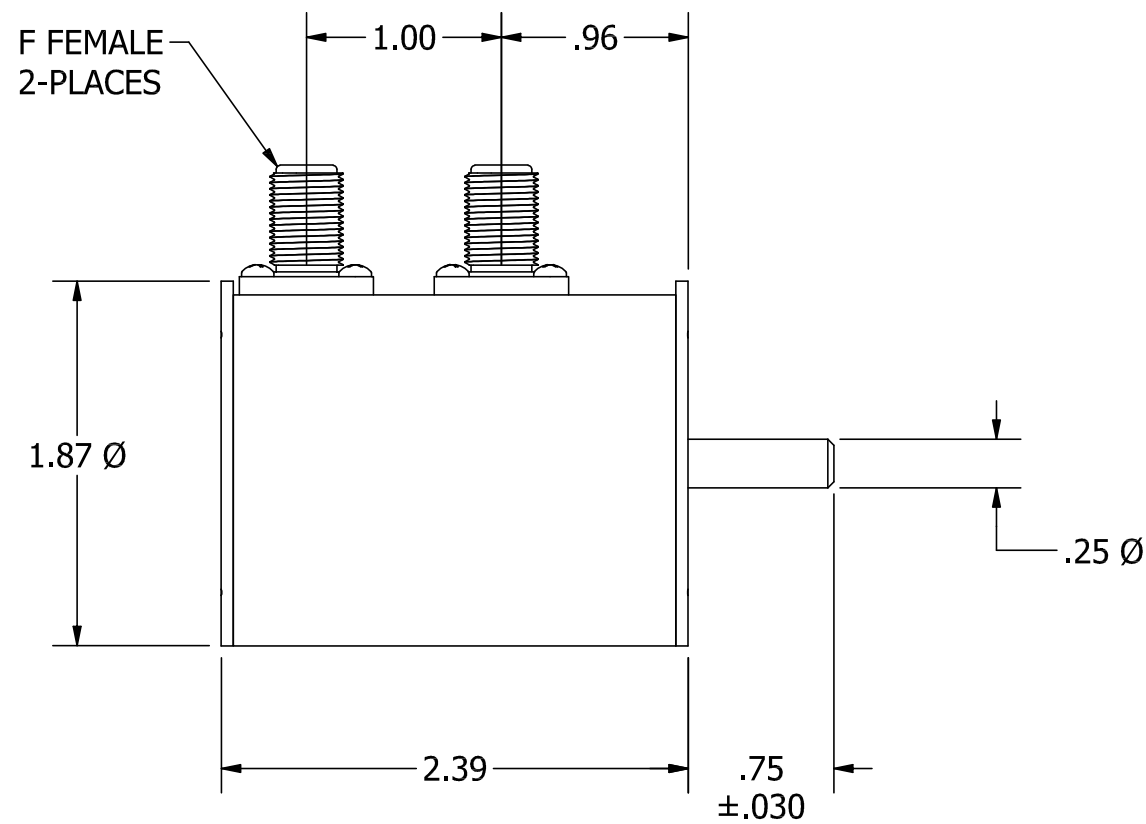
Outline Drawings 092-9531-01 (75R-057 BNC)
092-9531-02 (75R-057 F)
092-9531-03 (75R-057 N)

ECR/ECN #	DATE	REV	APPR / DATE	ECR/ECN #	DATE	REV	APPR / DATE
9999	05/19/2003	B	BAC 02/05/2004	25779	09/29/2015	E	TRS 09/29/2015
17378	07/02/2009	C	TRS 07/02/2009	28157	10/05/2017	F	TRS 10/05/2017
22212	12/04/2012	D	TRS 12/04/2012	30383	05/11/2020	G	TRS 05/11/2020




KNOB DETAIL

REV	ECN	DATE	BY	APPR	 JFW INDUSTRIES, INC. www.jfwindustries.com PH: 317-887-1340		
-	ISSUED	4-24-20	GM	JZ	MATERIAL	ALUMINUM ALLOY	PROPRIETARY INFORMATION
					FINISH	CHEMFILM TCP	ALL SURFACES ARE TO BE FREE OF BURRS, PITS & SCRATCHES
					MODEL	75R-XXX	TOLERANCES .XX±.010 .XXX±.005 XX°±.5°
					DESCRIPTION	ROTARY ATTENUATOR	DWG # 092-9531-01
						SCALE FULL	



KNOB DETAIL

REV	ECN	DATE	BY	APPR
-	ISSUED	4-24-20	GM	JZ

 JFW INDUSTRIES, INC. www.jfwindustries.com PH: 317-887-1340		PROPRIETARY INFORMATION
		ALL SURFACES ARE TO BE FREE OF BURRS, PITS & SCRATCHES
MATERIAL	ALUMINUM ALLOY	TOLERANCES
FINISH	CHEMFILM TCP	.XX \pm .010 .XXX \pm .005 XX \pm .5°
MODEL	75R-XXX	SCALE FULL
DESCRIPTION	ROTARY ATTENUATOR	DWG #
		092-9531-02

