

NOTES: UNLESS OTHERWISE SPECIFIED.

1. MATERIAL & FINISH:

- 1.1 HOUSING, COUPLING NUT, MOUNTING NUT & LOCKWASHER: PASSIVATED STAINLESS STEEL
- 1.2 DIELECTRIC: PTFE (TEFLON)
- 1.3 CENTER CONTACT: GOLD PLATED BERYLLIUM COPPER
- 1.4 GASKETS: SILICONE RUBBER

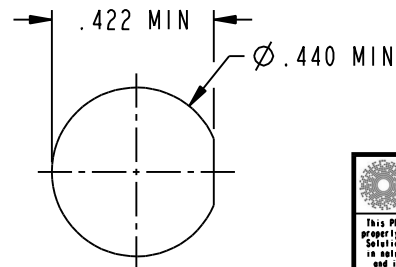
2. ELECTRICAL:

- 2.1 FREQUENCY RANGE: DC TO 18.0 GHz
- 2.2 VSWR (MAX): 1.07 + .015 f(GHz)
- 2.3 IMPEDANCE: 50 OHMS

3. CENTER CONTACT CAPTURED I.A.W. MIL-C-39012.

4. PANEL THICKNESS (MAX): .250

5. ALL OTHER MECHANICAL, ELECTRICAL AND ENVIRONMENTAL CHARACTERISTICS ARE I.A.W. MIL-C-39012.



RECOMMENDED
MOUNTING HOLE

<p>This PROPRIETARY Document is property of Cinch Connectivity Solutions. It is confidential in nature, non-transferable, and issued with the clear understanding that it is not to be traced or copied without permission and is returnable upon demand.</p> <p>INTERPRET DRAWING IN ACCORDANCE WITH ASME Y14.5-2009.</p>	<p>3RD ANGLE PROJECTION</p>	<p>MIDWEST MICROWAVE</p>
	<p>RoHS2 <input checked="" type="checkbox"/></p> <p>2011/65/EU</p>	<p>Title:</p> <p>TNC JACK TO SMA PLUG ADAPTER</p>
<p>UNLESS OTHERWISE SPECIFIED UNITS: INCH</p> <p>.XX ± .02 .XXX ± .005 ANGLES ± 2°</p>	<p>Model No.</p> <p>ADT-2815-TF-SMM-02</p>	
<p>Size</p> <p>A</p>	<p>DO NOT SCALE</p> <p>Date: 9/16/2015</p>	<p>Sheet</p> <p>1 OF 1</p>