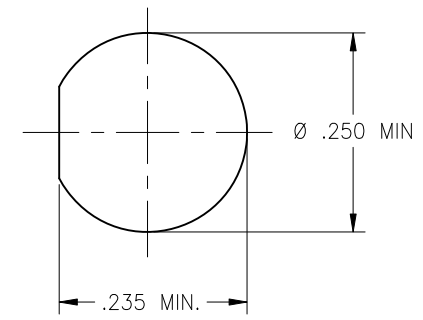


P/N	APPLICABLE NOTE(S)	(Ø A)	(Ø B)	CABLE TYPE(S)	FIGURE(S)
-1	1,2	.144	.250	Ø .141 SEMI-RIGID	1
-1SF	1,2	.144	.250	Ø .141 SEMI-RIGID	
-1NP	1,2	.144	.250	Ø .141 SEMI-RIGID	
-2	1,2	.088	.185	Ø .085 SEMI-RIGID	
-2SF	1,2	.088	.185	Ø .085 SEMI-RIGID	
-3	1,2	.144	.250	Ø .141 MICROPOROUS	
-3SF	1,2	.144	.250	Ø .141 MICROPOROUS	
-4	1,2	.088	.185	Ø .085 LOW LOSS	
-4SF	1,2	.088	.185	Ø .085 LOW LOSS	
-5CC	1,2	.050	.120	Ø .047 SEMI-RIGID	

REVISIONS				
ZONE	REV	DESCRIPTION	DATE	BY
-	C	ECO 17802	01.11.05	RC
-	D	ECO 18951	01.16.06	DKN
-	E	ECO 19832	12.15.06	DKN



RECOMMENDED MOUNTING HOLE

NOTE(S):

1. THESE AREAS REQUIRED GOLD PLATE FOR PART NUMBERS END WITH "SF".

DRAWING NO.	5289	REV.	E
-------------	------	------	---

MATERIAL:	ELECTRICAL:	MECHANICAL:	ENVIRONMENTAL:
Body & Locknut: 303 SST per ASTM A-582 Center Conductor: BeCu Alloy per ASTM B-196 Insulator: PTFE Teflon per ASTM D-1710 O-Ring: Silicone S613-60 or S604-70 Lockwasher: SST 410 Epoxy: Sigma VF Type HV	Impedance: 50 Ohms Nom. Freq. Range: DC TO 18 GHz VSWR: 1.05 + .005*f (GHz) Insertion Loss: .03 x √f GHz Working Voltage: 335 Vrms @ Sea Level Insulation Resistance: 5000 Mohms Dielectric Withstand Voltage: 1000 V rms RF HiPot Voltage: 670 Vrms Min @ 5MHz RF Leakage: -(90 - f GHz) dB Corona Level: 250 Vrms @ 70,000 ft Contact Resistance Center Conductor: Before Environmental: 3.0 Milliohms After Environmental: 4.0 Milliohms	Interface Dimensions: MIL-PRF-39012 Connector Durability: 500 Cycles Center Contact Retention: 6 lbs Min Axial N/A Radial Force to Engage and Disengage: 2 inch lbs max TORQUE Cable Retention Force: 60 lbs Min.	Temp. Range: -65°C to +165°C Thermal Shock: MIL-STD-202, Method 107, Test Cond. B Moisture Resistance: MIL-STD-202, Method 106. Insulation resistance at least 200 MegaOhms within 5 minutes after removal from humidity Corrosion: MIL-STD-202, Method 101, Test Cond. B Vibration: MIL-STD-202, Method 204, Test Cond. D Shock: MIL-STD-202, Method 213, Test Cond. I

FINISH:
 Body:
 (for SF's) Passivated per ASTM A-967 OR AMS-QQ-P-35
 (for CC & Basic) Gold plate per ASTM B-488 over Nickel plate per AMS-QQ-N-290
 (for NP's) Nickel plate per AMS-QQ-N-290
 Locknut & Lockwasher:
 (for SF's & NP) Passivated per ASTM A-967 OR AMS-QQ-P-35
 (for CC & Basic) Gold plate per ASTM B-488 over Nickel plate per AMS-QQ-N-290
 Center Conductor:
 Gold plate per ASTM B-488 over nickel plate per AMS-QQ-N-290.

APPLICABLE TENSOLITE DOCUMENTS		
WORK STD	PROD INST	ASSY INST
NA	NA	NA

TOLERANCES AND NOTES EXCEPT AS NOTED
 DIMENSIONS ARE IN INCHES.
 LINEAR .XX ±.015 .XXX ±.005 ANGULAR ± 1/2° FRACTION ± 1/32

- MACHINE FINISH: $\sqrt{}$ RMS
- BREAK ALL SHARP EDGES .003 MAX.
- MACHINED FILLETS .005 MAX.
- MACHINED SURFACES SQUARE TO RESPECTIVE AXIS WITHIN .005 INCHES PER INCH.
- MACHINED DIAMETERS CONCENTRIC WITHIN .002 T.I.R.
- DIMENSIONS TO BE MET BEFORE PLATING.
- CHAMFER ALL THREADS 45°.
- THREADS PER H-28
- REMOVE FRAYED EDGES ON TEFLON.
- REMOVE ALL BURRS.

NOTICE
 THIS DRAWING EMBODIES A CONFIDENTIAL PROPRIETARY DESIGN ORIGINATED BY TENSOLITE COMPANY AND ALL DESIGN, MANUFACTURING, REPRODUCTION, USE AND SALE RIGHTS REGARDING THE SAME ARE EXPRESSLY RESERVED. IT IS SUBMITTED UNDER A CONFIDENTIAL RELATIONSHIP FOR A SPECIFIED PURPOSE AND THE RECIPIENT AGREES BY ACCEPTING THIS DRAWING NOT TO SUPPLY OR DISCLOSE ANY INFORMATION REGARDING IT TO ANY UNAUTHORIZED PERSON TO INCORPORATE IN OTHER PROJECTS ANY SPECIAL FEATURES PECULIAR TO THIS DESIGN. ALL PATENT RIGHTS HERETO ARE EXPRESSLY RESERVED BY TENSOLITE COMPANY, LONG BEACH, CALIFORNIA 90815.

SEE NOTES		-	SEE NOTES	-
MATERIAL		SIZE	SPECIFICATION	PROCUREMENT
NEXT ASSY		Tensolite HIGH PERFORMANCE CABLES & INTERCONNECT SYSTEMS Long Beach, California 90815		
APPROVAL INITIALS	DATE	TITLE		
DRAWN BY: IMG	04.04.02	SMA FEMALE BULKHEAD FEEDTHROUGH TO SEMI-RIGID CABLE		
CHECKED		SCALE	SUB-DIRECTORY/FILENAME	SHEET 1 OF 2
QUALITY		6:1	OL	
ENGINEERING: DNg	12.15.06	SIZE	CAGE CODE	DRAWING NO.
		C	30990	5289
				REV. E

4

3

2

1

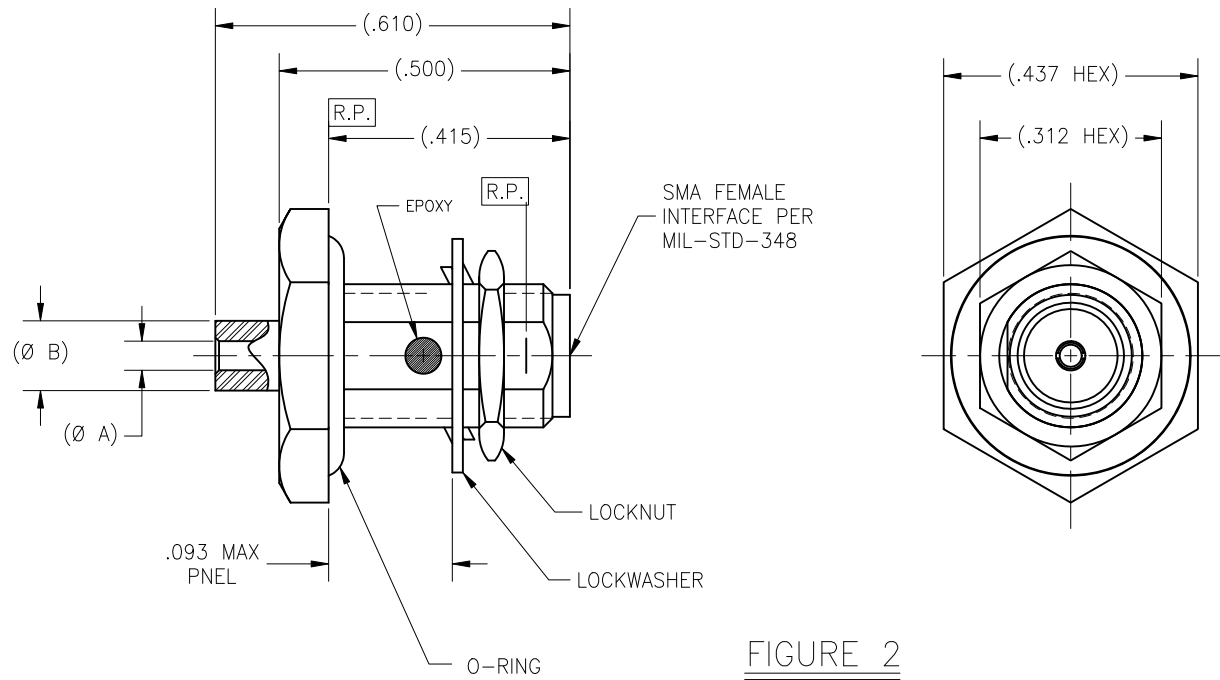


FIGURE 2

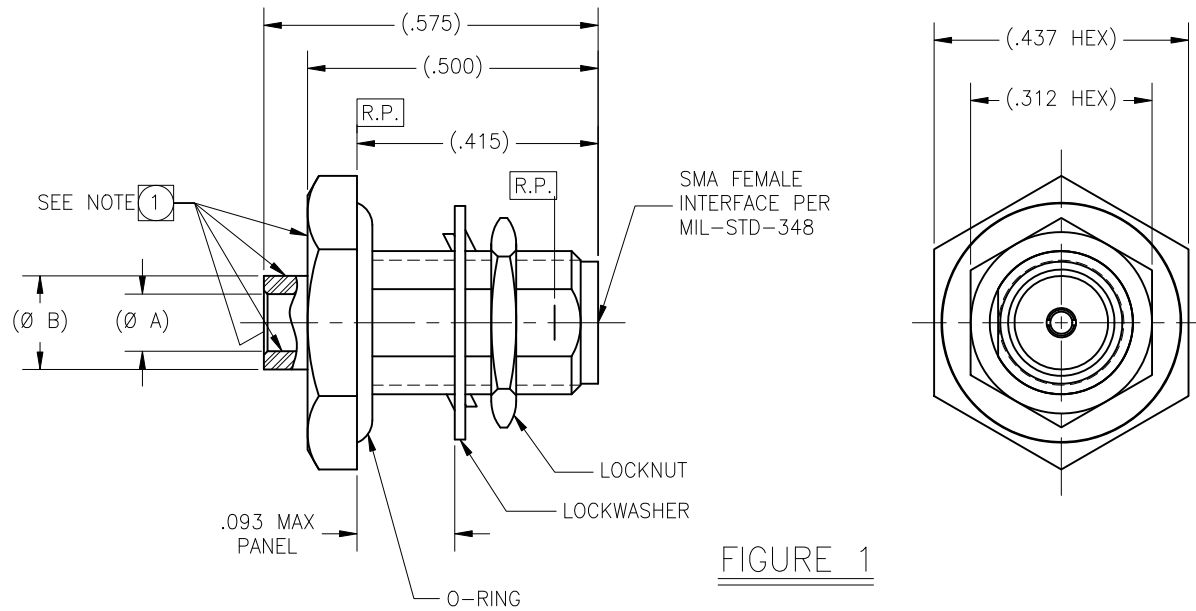


FIGURE 1

SCALE 6/1	SUB-DIRECTORY\FILENAME _OL\	SHEET 2 OF 2
SIZE C	CAGE CODE 30990	DRAWING NO. 5289
		REV. E

4

3

2

1