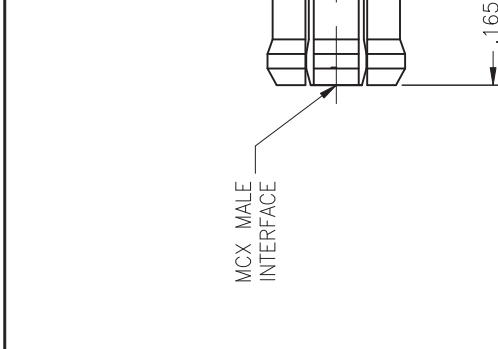
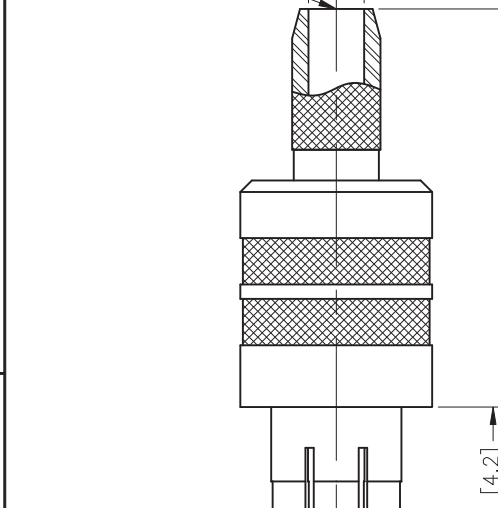
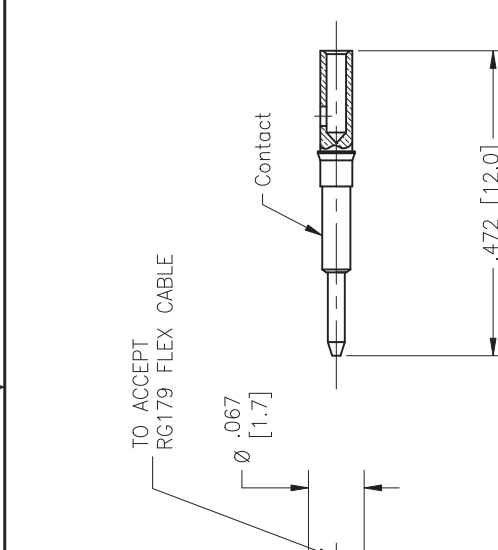


REVISIONS		DATE	BY
ZONE	REV	DESCRIPTION	
-	A	ECO 21080	03.14.08 DKN
-	B	ECO 21661	10.16.08 DKN



RECOMMENDED STRIPPING INSTRUCTIONS

Note(s):
 1. Dimensions shown in [-] are in mm.
 2. Contact and Crimp Sleeve to be packaged and shipped unassembled.

MATERIAL(S):
 Crimp Sleeve: Copper
 Body (MCX): BeCu
 Insulator: PTFE
 Body & Center Conductor: Brass

ELECTRICAL:
 Impedance: 75 Ohms RG179
 Freq. Range: 0 - 6 GHz
 VSWR: 1.22 MAX 0 - 2 GHz
 1.35 MAX 2 - 6 GHz
 Insertion Loss: 0.4dB MAX
 Dielectric Withstand Voltage: 500 Vrms @ Sea Level
 Working Voltage: 170 Vrms @ Sea Level
 Insulation Resistance: 1000 MegaOhms Min.
 Contact Resistance:
 Center Conductor: 5.0 MilliOhms Max
 Outer Conductor: 2.5 MilliOhms Max
 RF Leakage: -60 dB MIN

MECHANICAL:
 Connector Durability:
 500 Cycles
 Mating:
 Per CECC 22220
 "Push-Pull" Snap-On Coupling
 Cable Retention:
 20 lbs Min , RG179
 Engagement Force: 5.6 lbs Max
 Disengagement Force: 3.4 lbs Max

ENVIRONMENTAL:
 Temp. Range: -55°C to +155°C

APPLICABLE CARLSLE IT DOCUMENTS		TOLERANCES AND NOTES EXCEPT AS NOTED	
WORK STD	PROD INST	ASSY INST	
NA	NA	NA	
<p>NOTICE</p> <p>THIS DRAWING IS A CONFIDENTIAL, PROPRIETARY DESIGN ORIGINATED BY CARLSLE INTERCONNECT TECHNOLOGIES. IT IS THE PROPERTY OF CARLSLE INTERCONNECT TECHNOLOGIES AND IS NOT TO BE REPRODUCED, COPIED, OR TRANSMITTED IN ANY FORM OR BY ANY MEANS, ELECTRONIC OR MECHANICAL, INCLUDING PHOTOCOPYING, RECORDING, OR BY ANY INFORMATION STORAGE AND RETRIEVAL SYSTEM. ANY UNAUTHORIZED REPRODUCTION OR USE OF THIS DRAWING IS EXPRESSLY PROHIBITED. ALL RIGHTS RESERVED. CARLSLE INTERCONNECT TECHNOLOGIES, LONG BEACH, CA 90815</p>			
<p>APPLICABLE CARLSLE IT DOCUMENTS</p> <p>WORK STD: NA</p> <p>PROD INST: NA</p> <p>ASSY INST: NA</p>		<p>TOLERANCES AND NOTES EXCEPT AS NOTED</p> <p>DIMENSIONS IN INCHES:</p> <p>UNLESS OTHERWISE SPECIFIED:</p> <p>FRACTION ± 1/32</p> <p>DECIMAL ± 0.005</p> <p>ANGULAR ± 1/2°</p> <p>1. MACHINE FINISH: $\sqrt{3}$ RMS</p> <p>2. BREAK ALL SHARP EDGES .003 MAX.</p> <p>3. MACHINED SURFACES: .005 MAX.</p> <p>4. MACHINED SURFACES SQUARE TO RESPECTIVE AXES WITHIN .005 INCHES PER INCH.</p> <p>5. UNLESS OTHERWISE SPECIFIED, ALL DIMENSIONS ARE TO BE TAKEN TO THE CENTER OF THE PART.</p> <p>6. CHAMFER ALL THREADS 45°.</p> <p>7. THREADS PER ANSI B92.1.</p> <p>8. THREADS PER ANSI B92.2.</p> <p>9. UNLESS OTHERWISE SPECIFIED, ALL DIMENSIONS ARE TO BE TAKEN TO THE CENTER OF THE PART.</p> <p>10. REMOVE ALL BURRS.</p>	
<p>FINISH(ES): Body (MCX), Body & Crimp Sleeve: Albaloy .000080 thick. Center Conductor: Gold plate .000030 thick.</p>		<p>APPROVAL INITIALS</p> <p>DRAWN BY: DKN</p> <p>CHECKED BY:</p> <p>TEST ENG:</p> <p>QUALITY:</p> <p>DESIGN ENG: DNG</p> <p>MFG ENG:</p>	
<p>MATERIAL</p> <p>SIZE: -</p>		<p>SPECIFICATION</p> <p>PROCUREMENT:</p>	
<p>CARLSLE Interconnect Technologies Long Beach, CA 90815</p>		<p>TITLE MCX MALE STRAIGHT TO RG179 FLEX CABLE, 75 OHMS</p>	
<p>SCALE NONE: 1:1</p>		<p>SIZE C [30990]</p>	
<p>REV</p> <p>1</p>		<p>SHEET 1 of 1</p>	
<p>DWG NO. M479-10636-1CC</p>		<p>REV</p> <p>B</p>	